



Live life Comfortably.™

Pre-Delivery and Installation Guide

Important Information for Consumers to Prepare for Delivery and Installation
of Their New La-Z-Boy Spa



La-Z-Boy Spas - Worldwide Manufacturing / Customer & Dealer Support

335 Superior Blvd., Mississauga, Ontario - Canada L5T2L6

Phone: 800.465.2933 Fax: USA - 727.279.6905 Fax: CAN - 905.565.6820

Email: technicalsupport@lazboyspas.com Web Site: www.lazboyspas.com

La-Z-Boy® Spas
Pre-Delivery and Installation Guide
Table of Contents

Introduction	4
Checklist	5
Site Selection	6
1. What Model are you Installing?.....	6
2. When are you Installing?.....	7
3. Where are you Installing?.....	8
4. How are you Installing?.....	10
Site Preparation	11
Contact Your Electrician	12
Route Planning	13
Understanding the Installation Steps	14
1. Base Preparation.....	14
2. Electrical Preparation.....	15
3. Driveway Delivery.....	16
4. Backyard Transfer.....	17
5. Final Electrical Connection.....	18
6. Fill, Test, Demonstrate.....	19
Spa Shipments	20
Other	21
Notes	22

Important: La-Z-Boy Spas is dedicated to offering you the best in customer satisfaction and service. Be sure that you complete, sign, and **send in the guarantee card within 30 days of purchase.** You or you can register the La-Z-Boy Spas guarantee online at www.lazboyspas.com. If you have any questions, please call the La-Z-Boy Spa Technical Service department for more information.

Copyright © 2010 La-Z-Boy® Spas. All rights reserved. No portion of this program outline may be reproduced in any manner without express written permission from La-Z-Boy Spas.

La-Z-Boy® is a registered trademark of La-Z-Boy Incorporated and is used under license to 2217044 Ontario Inc.

Introduction

Your choice of a La-Z-Boy® Spa / Hot Tub indicates that you are devoted to excellence. The La-Z-Boy Spas management and staff appreciate your patronage and take pride in the tradition of quality spas that our company represents.

To properly acquaint yourself with your spa / hot tub, we suggest that you take time to read through this guide to help you with the delivery and installation process. Doing so will familiarize you with important installation steps and considerations thereby ensuring an enjoyable experience right from the start.

If you need any more information than this manual provides, feel free to call your local dealer or visit our web site at www.lazboyspas.com.



WARNING: This manual was written to ensure the proper use and installation of your spa / hot tub. Any modifications to the procedures outlined in this manual may result in voiding your guarantee.

This manual and its contents are subject to change without notice. Although we have prepared this manual as accurately as possible, we are not liable for errors or omissions; loss, injury, or damages caused by improper installation; or use of spa / hot tub (improper or otherwise).

Notes: _____

Checklist

After purchasing or ordering your spa / hot tub , there are many time-critical things that must be done in order to ensure a successful installation. Below is a summary list of these items in the order these items should be performed.

Important: In situations where the spa will be delivered by a delivery service and the installation is to be completed at a later date, it is highly recommended that you are present at the time of delivery to inspect the spa and ensure that it is in satisfactory condition. If there is any damage to the spa, it must be reported to the shipper at the time of delivery.

- Choose a location
- Plan the site
- Contact an electrician
- Plan the delivery route
- Unpack your spa / hot tub
- Inspect all surfaces for signs of damage
- What to do in the rare event that damage is found
- File a claim
- Move your spa / hot tub into place
- Call the electrician to hook up the wires and GFCI breaker
- Fill, test and run the spa / hot tub



With advance delivery and installation planning addressed, all you will have to look forward to is sitting back comfortably and enjoying your La-Z-Boy Spa / Hot Tub experience.

Site Selection

1. What Model are You Installing

The shape and size of the spa / hot tub that you are planning to install may influence the location of the installation.

This is why it may be important to determine what spa / hot tub model you are going to purchase first. If there is a specific location that you want to install the spa / hot tub , it is recommended that you measure and record the total area.

Keep in mind that you may require room to access cover latches and locks. You may also require clearance for a cover remover to operate and may need room to position an entry step.



2. When are you Installing

Many installations require some kind of ground and electrical preparation and many require very little. Although some installations require little or no preparation, it will be necessary to consider what will need to be prepared in advance of the spa / hot tub arriving at your home.

In northern climates, it may be challenging to prepare a base for the spa / hot tub if needed. It may also be challenging to complete any electrical work if needed.

In order to ensure a smooth and trouble free installation, it is always recommended that any ground preparation and electrical work be performed prior to the delivery and backyard transfer of the spa / hot tub. This is why it is important to take into consideration when (or what time of year) you are going to install a spa / hot tub.



3. Where are you Installing?

Site selection and preparation is often your responsibility and we strongly suggest that you seek the advice of a spa / hot tub expert such as your local Authorized La-Z-Boy Spas Dealer.

In order to ensure that you maximize all of the many health and lifestyle benefits that a La-Z-Boy Spa / Hot Tub has to offer, it is important to ensure that the final installation is easily accessible, comfortable and convenient.

We suggest that the following be considered in order to help determine the best place to install a La-Z-Boy Spa / Hot Tub:

- (a) Distance to Home - Keep it as close to the home as possible
- (b) Privacy - Make it comfortable
- (c) Orientation - Make sure you have a great view
- (d) Cover Removal - It must easily come on and off
- (e) Equipment Service Access - Make it accessible
- (f) Exposure to Wind, Sun, Rain - Eliminate as much as possible
- (g) Indoor Ventilation - A must for the location
- (h) Drainage - Do not flood the equipment or place in constant moisture

More on Indoor Installations



For these installations, consider the amount of ventilation in the room since spas / hot tubs produce considerable amounts of moisture. Your spa / hot tub area should contain moisture resistant wall / floor coverings and building materials to avoid damage from moisture over time. Also, your spa / hot tub will require draining as part of the normal maintenance of the unit. Provide an avenue for this spa / hot tub waste drainage.

Load bearing capabilities of this room must also be verified. A spa / hot tub filled with water is very heavy; a spa / hot tub filled with people is even heavier. Make certain that your floor can easily support all of this weight.

More on Outdoor Installations

If you live in a climate with cold, snowy winters, consider locating your spa / hot tub close to the house for easy access. You also may want to consider some type of windbreak or barrier to surround the unit. Southern exposure is usually preferable. Make note of any eaves; you would not want to position your spa / hot tub under a gutter or eave that could allow melting snow to slide onto your spa / hot tub. Eaves also could allow rain or snow melt to drip or splash on your spa / hot tub.

If you live in a warmer climate, you may want to provide shade around your spa / hot tub for relief from the sun. Deck awnings, gazebos and porch coverings are some of the most common solutions.

Regardless of climate, provide a walkway or access to your spa / hot tub that will prevent dirt and foliage from being introduced to your spa / hot tub. Think about the location of trees and shrubs. While landscaping can provide additional privacy, take care when making your landscaping selections to avoid deciduous varieties that may shed their leaves seasonally and no longer provide privacy. Or worse, shed their leaves in and around your spa / hot tub area thereby increasing your maintenance.



4. How are you Installing?

There are many ways to install a La-Z-Boy Spa / Hot Tub. Every installation scenario is slightly different and many homeowners take a unique approach to adding a spa / hot tub to their home.

Above ground installations are the most common and are the least complicated while In-ground Installations are the least common and are the most complicated. No matter how you are planning on installing your spa / hot tub, careful preparation must be made in order to ensure that your installation is safe, convenient and long lasting.

Installations other than above ground usually require the expertise of a landscape contractor who is familiar with excavating and providing for drainage.

- (a) Above Ground
- (b) Semi Above Ground
- (c) In-Ground

Some installations may require the assistance of a professional consultant or contractor. Whenever there is a question about structural integrity, load requirements, or safety, an architect, contractor or engineer can usually provide answers to these and similar questions.



Other installations may require the use of special equipment to lift the spa / hot tub from the delivery point to the installation location. Cranes and special equipment needs must be identified and pre-planned and scheduled long before the arrival of your spa / hot tub.

Site Preparation

Once you have chosen the location, your La-Z-Boy Spa / Hot Tub needs a foundation capable of supporting well over 1,000 pounds. In most cities and counties, permits are required for the installation of electrical circuits or the construction of exterior surfaces (decks and gazebos).

In addition, some communities have adopted residential barrier codes, which may require fencing and/or self-closing gates on the property to prevent unsupervised access to a pool (or spa) by young children (typically under 5 years of age). Your new La-Z-Boy Spa / Hot Tub is equipped with a locking cover that meets the ASTM F1346-91 Standard for safety covers and as a result, is usually exempt from most barrier requirements. As a general practice, ask your local Building Department about any applicable barrier requirements when you obtain the permit for the installation of an electrical circuit.

Building Permits



Some jurisdictions require that building permits be obtained depending upon the nature and extent of the improvement. Contact your local city/county government offices and inquire about building permit requirements for installing your spa and how to obtain them prior to delivery of your spa / hot tub.

Preferred Foundation

We highly recommend having a special foundation prepared for your La-Z-Boy Spa Hot Tub. A four-inch thick bed of concrete is advisable in most situations. If you choose a concrete foundation, allow a few days for this foundation to properly cure before filling your spa / hot tub to obtain maximum strength.

Note: Your La-Z-Boy Spas Guarantee does not cover damage due to improper placement of the spa / hot tub or an improper foundation.



Contact an Electrician

Like any major appliance, a spa / hot tub has special electrical needs. Adequate wiring and safety protection features are essential in making your spa / hot tub as safe and efficient as possible. Once you have decided where to put your spa / hot tub, contact a certified electrician to work with you on issues pertaining to electrical safety and aesthetics.

Electrical Capacity

Your new La-Z-Boy Spa / Hot Tub requires a 240VAC, single-phase, Siemens GFCI breaker. Make sure that the main circuit panel in your home can accommodate this extra load. If additional electrical capacity is needed, more time will be needed for your electrician to install these wires, panels, and breakers.



All spas / hot tubs must be wired with the correct size breaker. **REFER TO THE MODEL SPECIFIC OWNERS MANUAL FOR COMPLETE ELECTRICAL SPECIFICATIONS AND WIRING INSTRUCTIONS - YOU CAN DOWNLOAD THE MODEL SPECIFIC OWNERS MANUAL FROM THE La-Z-Boy Spas WEB SITE.** Failure to wire the La-Z-Boy Spa / Hot Tub correctly will cause equipment damage and will void your guarantee. All spas / hot tubs must be protected with an over current protective device with built-in GFCI in the service panel.

Grounding and Safety

Proper grounding is essential for safe operation. All equipment and accessories must be wired in accordance with the National Electric Code, section 422-20, ANSI/NFPA 70, and also comply with any local electrical codes. **Use only a Siemens GFCI breaker installed in a weatherproof box.**

Route Planning

Once you have settled on a location for your La-Z-Boy Spa / Hot Tub, your spa / hot tub will likely be difficult to move from the delivery truck to this location. Your spa / hot tub weighs approximately 1,000 pounds, is more than 3 feet wide, and can be almost 8 feet tall and long. Moving such a large, heavy object on a small cart around corners, up hills, and through gates can be quite precarious. Now is the right time to plan how to navigate these twists and turns.



Some routes may go under trees, through arches, or over air conditioners. Other routes may twist through alleys, snake through the neighbor's yard, or even be lifted with heavy machinery into place when no land route is possible.

Whatever route you decide, walk the route several times and make sure there is enough room for the spa and its movers to safely do what must be done. Always look up to see if something would prohibit passage.

And finally, develop an alternate route plan in the event that the primary route does not work.



Understanding the Installation Steps

Step 1. Base Preparation

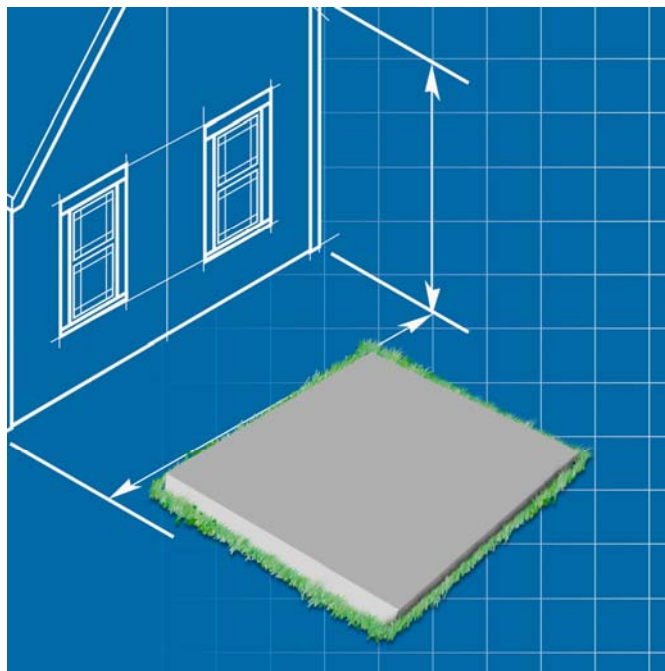
No matter where you decide to install your new La-Z-Boy Spa / Hot Tub , it's important that you have a solid foundation to support it. Structural damage to the spa / hot tub resulting from incorrect installation or placement on an inadequate foundation is not covered under the Guarantee.

If you install the spa / hot tub outdoors, a reinforced concrete pad at least four inches thick is recommended. The reinforcing rod or mesh in the pad should be attached to a bond wire.

La-Z-Boy Spas / Hot Tubs may be installed onto a deck, provided that the load capacity of the deck is greater than the dead weight of the spa.

If you place the spa / hot tub on the ground, even temporarily, place stepping stones under the leveling areas. The stones should be at least two inches thick and twelve inches square.

Even with stones in place, the spa / hot tub may settle and become uneven. Plus, a spa / hot tub that is surrounded by dirt or grass will soon be filled with dirt or grass from user's feet; therefore, it is important to locate the spa / hot tub on a solid foundation as soon as possible.



Step 2. Electrical Preparation

To ensure you will have an opportunity to use your La-Z-Boy Spa / Hot Tub soon after delivery, it is very important that the required electrical service is installed prior to delivery. Unless otherwise stipulated by your dealer, the electrical preparations IS YOUR RESPONSIBILITY.

IMPORTANT: All electrical circuits must be installed by a qualified, licensed electrician.

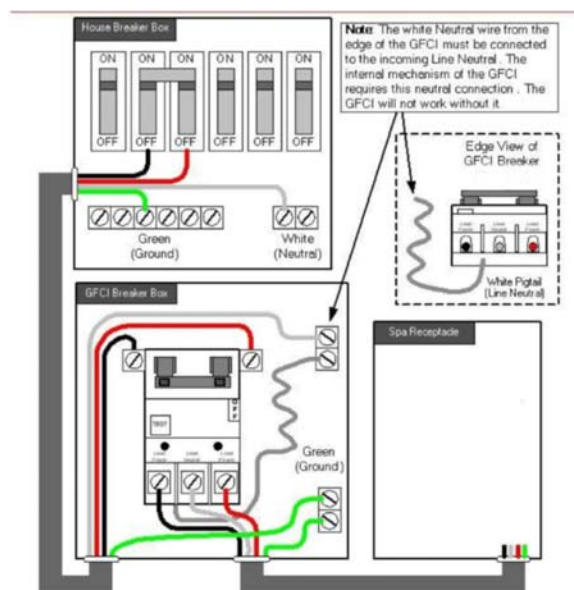
240 VOLT OPERATION REQUIREMENTS

Most 240 volt La-Z-Boy Spas / Hot Tubs require a **SEIMANS** 50 amp, single phase, 240 volt GFCI breaker in the main electrical service panel. All spas / hot tubs must be wired in accordance with applicable local and national electrical codes.

REFER TO THE MODEL SPECIFIC OWNERS MANUAL FOR COMPLETE ELECTRICAL SPECIFICATIONS AND WIRING INSTRUCTIONS - YOU CAN DOWNLOAD THE MODEL SPECIFIC OWNERS MANUAL FROM THE La-Z-Boy Spas WEB SITE.

A licensed electrician should install a four-wire electrical service (two line voltages, one neutral, one ground) from the main electrical service panel to the subpanel, and from the sub-panel to the spa per the appropriate wiring.

The grounding conductor must be at least #10 AWG. Your electrician should mount the subpanel in the vicinity of the spa / hot but it should not be closer than ten (10) feet / 3 (three) meters from the spa water edge (NEC 680-38 to 41-A-3).



Step 3. Driveway Delivery

Driveway delivery means that a truck pulls up to your home and delivers your spa / hot tub on your driveway or to your garage, as long as the driveway is paved and fairly level. Driveway delivery requires that your street be accessible to a full size tractor trailer (18-wheeler). If this is not possible:



- (a) Arrangements can be made to meet the driver with a pick-up truck or trailer. Here, the driver will “off-load” your spa / hot tub onto a suitable vehicle.
- (b) The shipper may arrange for a shuttle in a “Straight Truck” with a lift-gate (usually at an additional expense) to drop off your spa / hot tub at your driveway.

From there the spa / hot tub can be moved to its final location. We have found that the spa / hot tub can be moved in to place with 2 - 4 people and a 6 x 5-inches in diameter PVC pipes to roll the unit along or the use of a specialized spa / hot tub dolly.



Step 4. Backyard Transfer

In most cases the spa / hot tub can be transferred to your backyard by means of a special cart. In order to do so, the access path must be clear and slightly wider than the overall depth of the spa / hot tub. Height will also need to be considered.

It may be necessary to remove a gate, part of a fence, or other movable obstructions in order to roll the spa / hot tub to the installation site. About ten percent of the time, a crane is the only way to install the spa / hot tub by lifting it to the final installation location.

If the spa / hot tub has to be taken off of the cart to go over a wall (either because the entry area is too narrow, the eaves are too low, the corner is too tight, or the stairway is too steep), a crane will be required. Don't be alarmed!

The crane has a truck-mounted boom which can fit right in your driveway. It is run by a licensed and insured operator. For a reasonable charge, the crane operator will lift your spa / hot tub over walls, buildings, or any other obstruction and place it as close to the installation site as possible.

Your local dealer will usually supervise the crane delivery and complete the balance of the spa / hot tub installation. Crane delivery typically takes an average of 30 minutes



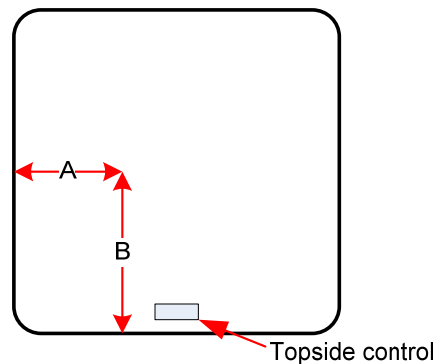
Step 5. Final Electrical Connection

After the spa / hot tub is placed in its final position, the electrical connection can be made.

IMPORTANT: All electrical circuits must be installed by a qualified, licensed electrician.

La-Z-Boy Spas / Hot Tubs do not include wire conduits in the kick plate at the base. The recommended drilling locations are located below and in the La-Z-Boy Spas / Hot Tubs Owner's Manual. Check for these before drilling any access holes. Identify the most convenient location to install the wire through the base, kick plate or through the cabinet.

No matter how the wire is installed, through the kick plate or cabinet, it will be necessary to ensure that the hole is permanently sealed with a high quality outdoor silicone.



Premier Collection Models	Dimension A	Dimension B
The Dream	13" (33 cm)	28" (71 cm)
Fantasy	16" (41 cm)	15" (38 cm)
Imagine	16" (41 cm)	26" (66 cm)
Soul Mate	16" (41 cm)	18" (46 cm)
Signature Collection Models	Dimension A	Dimension B
Revive	12" (30.5 cm)	12" (30.5 cm)
Relieve	12" (30.5 cm)	12" (30.5 cm)
Refresh	12" (30.5 cm)	12" (30.5 cm)
Rejoice	12" (30.5 cm)	12" (30.5 cm)
Classic Collection Models	Dimension A	Dimension B
Classic	30" (76 cm)	8" (20 cm)

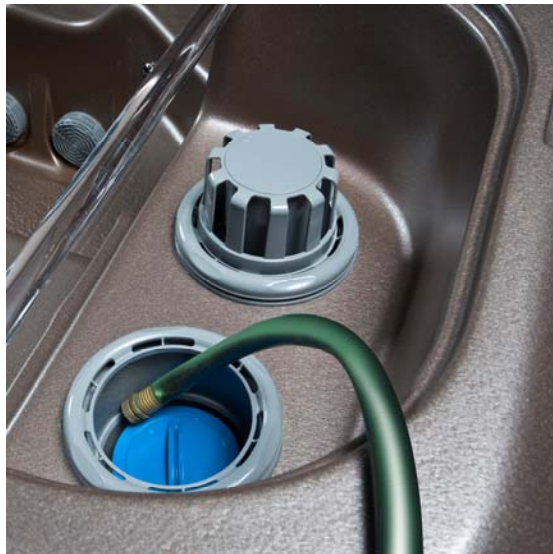
Step 6. Fill , Test, Demonstration

Using a standard garden hose, the spa / hot tub can be filled with fresh water from the tap. Be sure to by-pass your water softener and consider pre-filtering the water.

It is highly recommend that the spa / hot tub be filled through the cartridge filter intake port. This will help ensure that the wet end of the pump is filled with water and will help the system start without an air lock.

When the water level is well into the filter housing opening, turn the system on and test all of the spa / hot tub functions.

Please be sure to read the La-Z-Boy Spas / Hot Tubs Owner's Manual before using your new La-Z-Boy Spa / Hot Tub.



Spa Shipments

It is recommended that you be present when your La-Z-Boy Spa / Hot Tub is delivered. Once your spa / hot tub arrives, inspect it and all of its accessories immediately.

At the time of delivery, the delivery company, if not your dealer may expect you to sign a receipt (Bill of Lading) acknowledging that you received your delivery in good condition. Once you sign this document, all claims against the shipper are released so it is important to inspect the spa / hot tub before you sign anything.

No Damage Noted

If no damage is noted, make sure that all accessories and options from your original order are included. Note any missing accessories on the Bill of Lading.

Damage Noted

If damage is noted, **DO NOT SIGN THE BILL OF LADING.** Contact your dealer or La-Z-Boy Spas / Hot Tubs immediately. Describe the extent of the damage to determine if you should accept or refuse the shipment.

If damage is found, describe the damage in detail on the Bill of Lading prior to signing any documents and retain copies of all documents. If possible, photograph damages and attach copies to the Bill of Lading.

Remember that the Bill of Lading is a legal contract between you or your dealer and the shipper. The shipper is required by law to prepare a Bill of Lading for every shipment it transports. The information on the Bill of Lading is required to be the same information shown on the order for service.

IT IS YOUR RESPONSIBILITY TO READ THE BILL OF LADING BEFORE YOU ACCEPT IT.

The Bill of Lading requires the shipper to provide the service you have requested, and you must pay the charges for the service.

THE BILL OF LADING IS AN IMPORTANT DOCUMENT. DO NOT LOSE OR MISPLACE YOUR COPY. Have it available until your shipment is delivered, all charges are paid, and all claims if any, are settled.

Other

Interstate moving is monitored and regulated by the Federal Government. Much of the information in this guide is derived from this resource.

Should you have any questions about your move that are not answered in this guide, do not hesitate to ask the mover's representative who handles the arrangements for your move, the driver who transports your shipment, or the mover's main office for additional information.

For further advice or assistance, contact the Federal Highway Administration:

In the United States

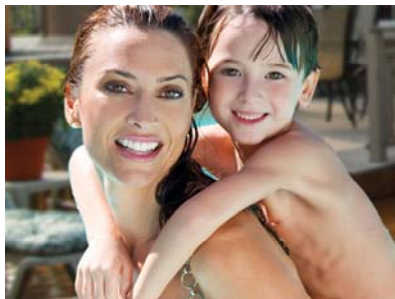
Licensing & Insurance Division (Hia-30)
Office of Motor Carrier and Highway Safety Information Analysis
Federal Highway Administration
400 Virginia Avenue, SW
Washington, DC 20024
(202) 358-7027

In Canada

Transport Canada
330 Sparks Street
Ottawa, ON K1A 0N
(613) 990-2309

We build spas to last.

Our spas will stand the test of time - not to mention your kids. Our strong state of the art and fully integrated support structure can handle what ever your family might dish out. La-Z-Boy® Spas are crafted to the highest industry standards with our frames, plumbing, mechanisms, cushions and shells constructed from the finest quality materials. Our spas are comprehensively water tested in our manufacturing facility before being certified to carry the La-Z-Boy name and just like La-Z-Boy furniture, they are quality tested before they leave our door. Superior quality control is our way of life. So get in, get comfortable and enjoy life.



We support you all the way with...

Unlike other manufacturers that may offer a limited warranty, La-Z-Boy Spas offers its customers a 100% No Nonsense, No Fine Print Guarantee to ensure peace of mind and care-free enjoyment.



Live life Comfortably.™

La-Z-Boy Spas - Worldwide Manufacturing / Customer & Dealer Support

335 Superior Blvd., Mississauga, Ontario - Canada L5T2L6

Phone: 800.465.2933 Fax: USA - 727.279.6905 Fax: CAN - 905.565.6820

Email: info@lazboyspas.com Web Site: www.lazboyspas.com